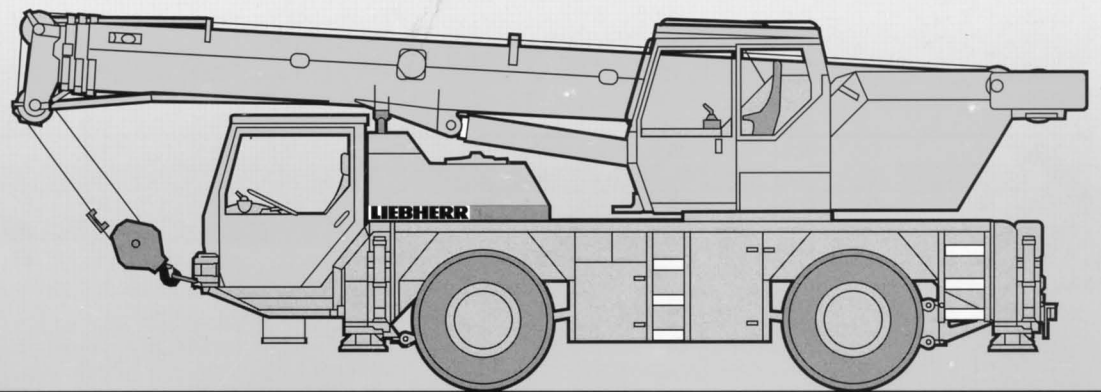


# Mobilkran · Mobile Crane    **LTM 1030/2** Grue automotrice

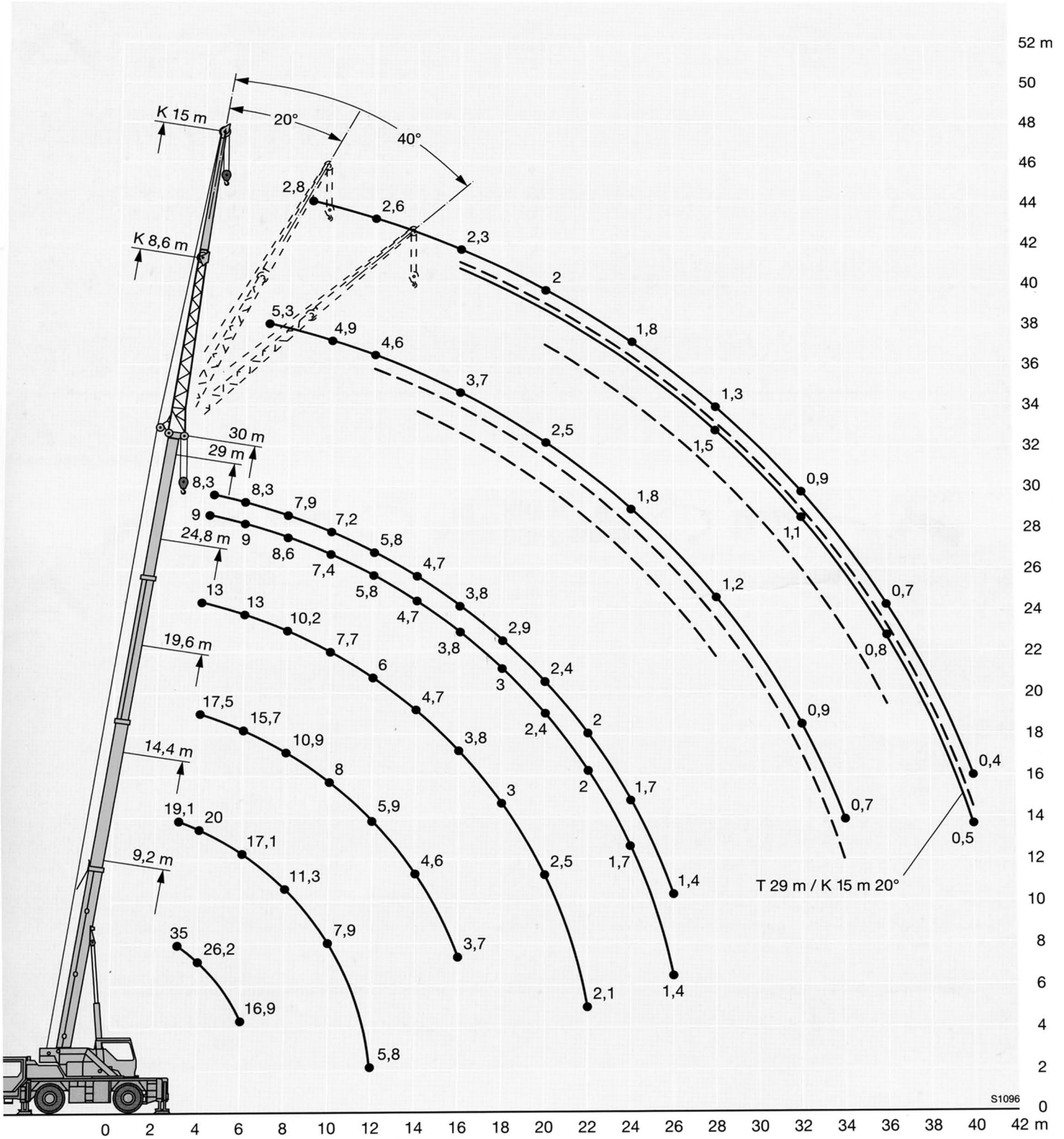
**Technische Daten**  
**Technical Data**  
**Caractéristiques techniques**

**WARRINGAH**  
**CRANE & TRANSPORT**  
9486 3444



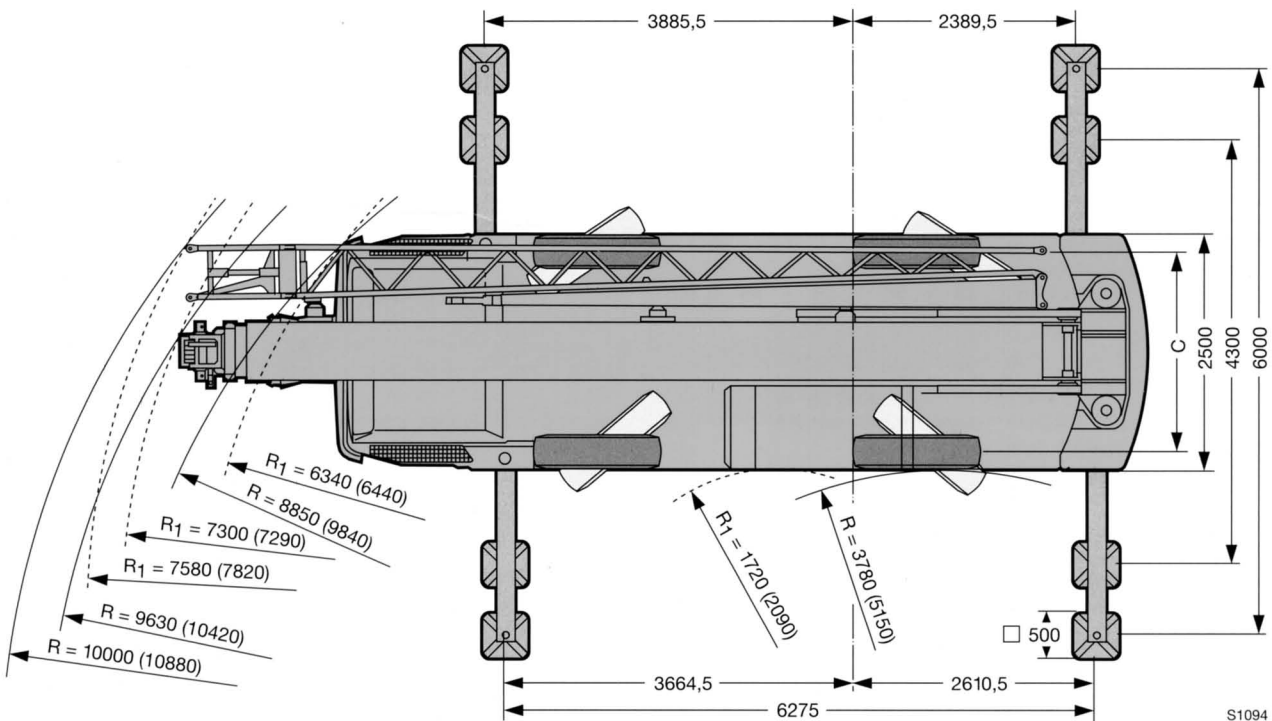
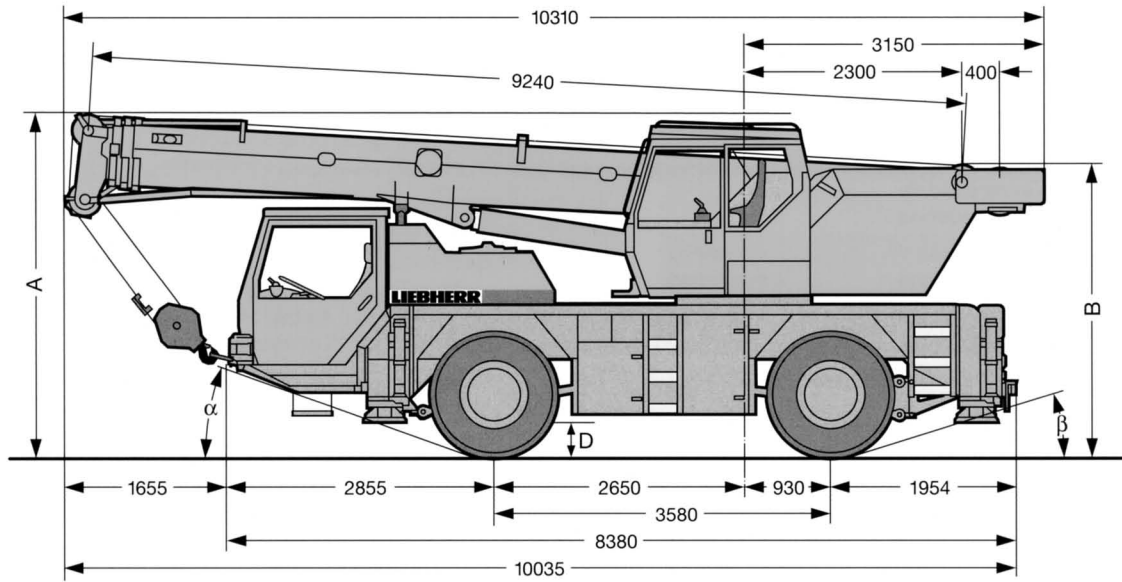
# **LIEBHERR**

**Hubhöhen**  
**Lifting heights**  
**Hauteurs de levage**



S1096

# Maße Dimensions Encombrement



S1094

R<sub>1</sub> = Allradlenkung / All-wheel steering / Direction toutes roues  
( ) = Bereifung 16.00 R 25 / Tyres 16.00 R 25 / Pneumatiques 16.00 R 25

	Maße / Dimensions / Encombrement mm							
	A	A*	B	B**	C	D	α	β
14.00 R 25	3550	3450	3050	2950	2094	400	18°	19°
16.00 R 25	3600	3500	3100	3000	2054	450	20°	21°

\* 100 mm abgesenkt / 100 mm lowered / abaissé 100 mm

\*\* abgesenkt und ohne Kabinenoberteil / lowered and without upper part of cab / abaissé et sans partie supérieure de cabine